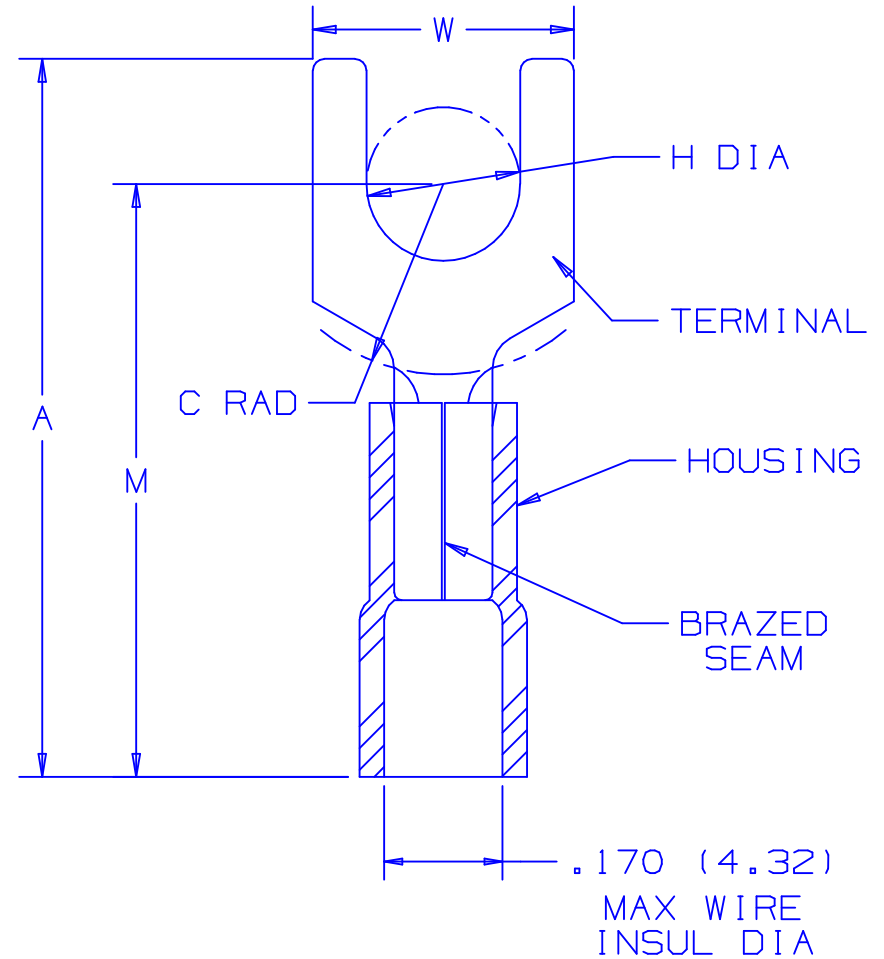


THIS COPY IS PROVIDED ON A RESTRICTED BASIS AND IS NOT TO BE USED IN ANY WAY DETRIMENTAL TO THE INTERESTS OF PANDUIT CORP.

PANDUIT PART NUMBER		STUD SIZE	DIMENSIONS in.				
PREFIX	PK		A \pm .020	W \pm .010	C \pm .015	M \pm .020	H \pm .010
PV18-6FX	-C -M -MY	#6	.83 (21.08)	.30 (7.62)	.21 (5.33)	.69 (17.53)	.15 (3.81)
PV18-8FX	-C -M -MY	#8	.89 (22.61)	.32 (8.13)	.25 (6.35)	.73 (18.54)	.17 (4.32)
PV18-10FX	-C -M -MY	#10	.91 (23.11)	.35 (8.89)	.25 (6.35)	.75 (19.05)	.20 (5.08)



NOTES :

- UL LISTED AND CSA CERTIFIED FOR:
 - 600 V MAX. VOLTAGE RATING
 - 221°F (105°C) MAX. TEMP. RATING
 - #22-18 AWG SOLID OR STRANDED, COPPER WIRE
- PACKAGE QTY.: STD C=100
BULK M=1000, MY=1000
- MATERIAL:
 - STAMPING - .032 (.81) THK COPPER, TIN PLATED
 - HOUSING - RED VINYL
- WIRE STRIP LENGTH: $5/16 \begin{matrix} +1/32 \\ -00 \end{matrix}$ $(7.94 \begin{matrix} +.80 \\ -.00 \end{matrix})$
- DIMENSIONS IN BRACKETS ARE IN MILLIMETERS
- INSTALLATION TOOLS:
 - UL AND CSA APPROVED: CT-100, CT-500*, CT-550*
 - PANDUIT APPROVED: CT-160, CT-260

* APPROVED FOR EXPANDED WIRE RANGE #22-16 AWG



LISTED
587H
E52164



CERTIFIED
LR31212

A41459_04

04	5/05	JHNU		ADDED PACKAGING CODE "MY" TO DRAWING.						<p>PANDUIT CORP. TINLEY PARK, ILLINOIS</p> <p>#22-18 BARREL VINYL INSULATED FORK .170 MAX WIRE INSUL DIA</p>		
03	1/01	RM	SKB	FILESPEC WAS NPC-A41459-02	--	JAC	CCH	08937				
02	3/91	DL		TANG WIDTH INCREASED PART NO PV18-6FX, PV18-8FX, PV18-10FX				00403				
--	--	--	--	REDRAWN ON CAD WITH REVISIONS	--	--	--					
REV	DATE	BY	CHK	DESCRIPTION	QA	CUST	PM	ECN#	DRAWN BY DRL	CHK'D	SCALE NONE	DRAWING NO. A41459